

The Thirty-First Week in Ordinary Time  
 November 6-November 10, 2023



Cover Art: © 2015 Constance Chen and Patrick Johnson. Used with permission.

*Welcome to The Basilica of Saint Mary, Minneapolis, Minnesota  
 America's First Basilica*

PENITENTIAL RITE

*Respond after the cantor:*

Lord, have mer - cy. Christ, have mer - cy. Lord, have mer - cy.

Text: *Lectionary for Mass*, © 1969, 1981, 1997, ICEL  
 Music Setting: Anthony Ruff, O.S.B. © Saint John's Abbey, Collegeville, MN All rights reserved. Reprinted with permission.

# PSALMODY

MONDAY, NOVEMBER 6

Psalm 69



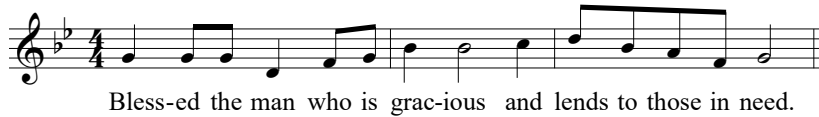
TUESDAY, NOVEMBER 7

Psalm 131



WEDNESDAY, NOVEMBER 8

Psalm 112



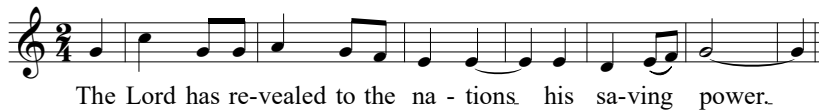
THURSDAY, NOVEMBER 9

*Feast of the Dedication of the Lateran Basilica in Rome*

SEPARATE LEAFLET

FRIDAY, NOVEMBER 10

Psalm 98



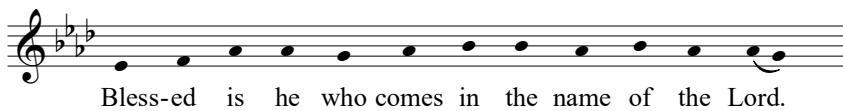
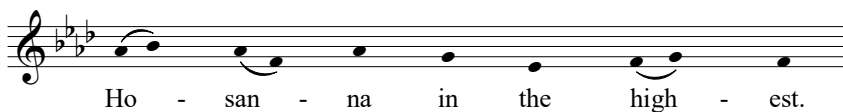
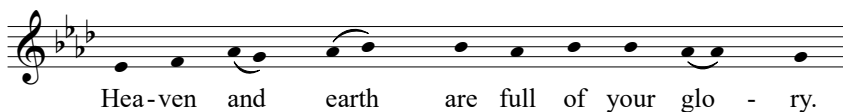
# GOSPEL ACCLAMATION



From *By Flowing Waters: Chants for the Liturgy*, Copyright © 1999 by Paul E. Ford. All rights reserved. Published and administered by The Liturgical Press, Collegeville, Minnesota 56321. Use with permission Onelicense.net A-704048.  
Musical adaptation copyright © 1999 by Paul F. Ford. All rights reserved. Used with permission.  
English translation by the International Consultation on English texts.

# EUCCHARISTIC ACCLAMATION

## SANCTUS



Text: *Lectionary for Mass*, © 1969, 1981, 1997, ICEL  
Music Setting: Anthony Ruff, O.S.B. © Saint John's Abbey, Collegeville, MN All rights reserved. Reprinted with permission.

MEMORIAL ACCLAMATION

We pro-claim your Death, O Lord, and pro-fess your  
Res - su - rec - tion, un - til you come a - gain.

The musical notation consists of two staves in G minor (one flat). The first staff contains the melody for the first line of text, and the second staff contains the melody for the second line. The notes are simple quarter and eighth notes with some ties.

AMEN

A - men, a - men, a - men.

The musical notation is on a single staff in G minor. It features a simple melody with quarter and eighth notes, including a long note for the final 'men'.

LAMB OF GOD

Lamb of God, you take away the sins of the world,  
have mer - cy on us. grant us peace.

The musical notation is on two staves in G minor. The first staff covers the first line of text, and the second staff covers the second line. The second line includes a first ending (1, 2) and a second ending (3) marked with repeat signs.

Text: *Lectionary for Mass*, © 1969, 1981, 1997, ICEL  
Music Setting: Anthony Ruff, O.S.B. © Saint John's Abbey, Collegeville, MN All rights reserved. Reprinted with permission.

THE BASILICA  
OF SAINT MARY

