

The Fourth Week in Ordinary Time

January 29-February 2, 2024



Cover Art: © 2015 Constance Chen and Patrick Johnson. Used with permission.

*Welcome to The Basilica of Saint Mary, Minneapolis, Minnesota
The First Basilica in the United States.*

PENITENTIAL RITE

Respond after the cantor:



Lord, have mer - cy. Christ, have mer - cy. Lord, have mer - cy.

Text: *Lectionary for Mass*, © 1969, 1981, 1997, ICEL. All rights reserved. Used with permission.
Music Setting: Anthony Ruff, O.S.B. © Saint John's Abbey, Collegeville, MN All rights reserved. Reprinted with permission.

PSALMODY

MONDAY, JANUARY 29

Psalm 3



Lord, rise up and save me!

The musical notation is a single staff in treble clef, 4/4 time signature, with a key signature of three sharps (F#, C#, G#). The melody consists of the following notes: G4 (quarter), A4 (quarter), B4 (quarter), C5 (quarter), B4 (quarter), A4 (quarter), G4 (quarter), and F#4 (quarter). The lyrics are placed below the notes, with "save" and "me!" connected by a slur.

TUESDAY, JANUARY 30

Psalm 86



Lis - ten, Lord, and an - swer me.

The musical notation is a single staff in treble clef, 4/4 time signature, with a key signature of three flats (Bb, Eb, Ab). The melody consists of the following notes: G4 (quarter), F#4 (quarter), E4 (quarter), D4 (quarter), C4 (quarter), B3 (quarter), A3 (quarter), and G3 (quarter). The lyrics are placed below the notes, with "Lis - ten," and "an - swer me." connected by slurs.

WEDNESDAY, JANUARY 31

Psalm 32




Lord, for - give the wrong I have done.

The musical notation is a single staff in treble clef, 4/4 time signature, with a key signature of three flats (Bb, Eb, Ab). The melody consists of the following notes: G4 (quarter), F#4 (quarter), E4 (quarter), D4 (quarter), C4 (quarter), B3 (quarter), A3 (quarter), G3 (quarter), F#3 (quarter), E3 (quarter), D3 (quarter), and C3 (quarter). The lyrics are placed below the notes, with "for - give" and "I have done." connected by slurs.

THURSDAY, FEBRUARY 1

1 Chronicles



Lord, you are ex - al - ted o - ver all.

The musical notation is a single staff in treble clef, 4/4 time signature, with a key signature of three flats (Bb, Eb, Ab). The melody consists of the following notes: G4 (quarter), F#4 (quarter), E4 (quarter), D4 (quarter), C4 (quarter), B3 (quarter), A3 (quarter), G3 (quarter), F#3 (quarter), E3 (quarter), D3 (quarter), and C3 (quarter). The lyrics are placed below the notes, with "ex - al - ted" and "o - ver all." connected by slurs.

FRIDAY, FEBRUARY 2

Feast of the Presentation of the Lord

SEPERATE LEAFLET

Text: Refrain, *Lectionary for Mass*, © 1969, 1981, 1997, ICEL; Verses, *The Revised Grail Psalms*,
Psalm refrain settings by Michael J. Accurso © 2019 Liturgical Music Source. All rights reserved. Reprinted with permission under Onelicense.net A-704048.

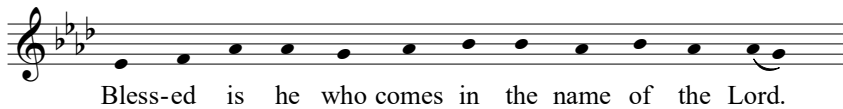
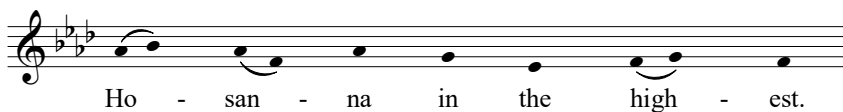
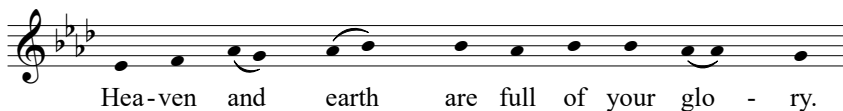
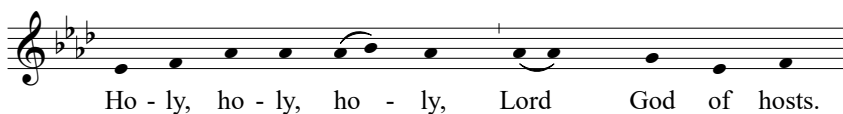
GOSPEL ACCLAMATION



From *By Flowing Waters: Chants for the Liturgy*, Copyright © 1999 by Paul E. Ford. All rights reserved. Published and administered by The Liturgical Press, Collegeville, Minnesota 56321. Use with permission Onelicense.net A-704048.
Musical adaptation copyright © 1999 by Paul F. Ford. All rights reserved. Used with permission.
English translation by the International Consultation on English texts.

EUCHARISTIC ACCLAMATION

SANCTUS



Text: *Lectionary for Mass*, © 1969, 1981, 1997, ICEL.
Music Setting: Anthony Ruff, O.S.B. © Saint John's Abbey, Collegeville, MN All rights reserved. Reprinted with permission.

MEMORIAL ACCLAMATION

We pro-claim your Death, O Lord, and pro-fess your
Res - su - rec - tion, un - til you come a - gain.

The musical notation is on a single staff in G minor (one flat) and 4/4 time. It consists of two lines of music. The first line contains the lyrics 'We pro-claim your Death, O Lord, and pro-fess your' and the second line contains 'Res - su - rec - tion, un - til you come a - gain.' The melody is simple and homophonic, using quarter and eighth notes.

AMEN

A - men, a - men, a - men.

The musical notation is on a single staff in G minor (one flat) and 4/4 time. It consists of one line of music with the lyrics 'A - men, a - men, a - men.' The melody is simple and homophonic, using quarter and eighth notes.

LAMB OF GOD

Lamb of God, you take away the sins of the world,
have mer - cy on us. grant us peace.

The musical notation is on a single staff in G minor (one flat) and 4/4 time. It consists of two lines of music. The first line contains the lyrics 'Lamb of God, you take away the sins of the world,' and the second line contains 'have mer - cy on us. grant us peace.' The melody is simple and homophonic, using quarter and eighth notes. There are first, second, and third endings indicated by brackets and numbers above the staff.

Text: *Lectionary for Mass*, © 1969, 1981, 1997, ICEL. All rights reserved. Used with permission.
Music Setting: Anthony Ruff, O.S.B. © Saint John's Abbey, Collegeville, MN All rights reserved. Reprinted with permission.

THE BASILICA
OF SAINT MARY

