

The Fourth Week in Ordinary Time

January 29-February 2, 2024



Cover Art: © 2015 Constance Chen and Patrick Johnson. Used with permission.

*Welcome to The Basilica of Saint Mary, Minneapolis, Minnesota
The First Basilica in the United States.*

PENITENTIAL RITE

Respond after the cantor:



Lord, have mer - cy. Christ, have mer - cy. Lord, have mer - cy.

Text: *Lectionary for Mass*, © 1969, 1981, 1997, ICEL. All rights reserved. Used with permission.
Music Setting: Anthony Ruff, O.S.B. © Saint John's Abbey, Collegeville, MN All rights reserved. Reprinted with permission.

PSALMODY

MONDAY, JANUARY 29

Psalm 3



Lord, rise up and save me!

The musical notation is a single staff in treble clef, 4/4 time signature, with a key signature of three sharps (F#, C#, G#). The melody consists of quarter notes: G4, A4, B4, C5, B4, A4, G4. The lyrics are placed below the notes: "Lord, rise up and save me!".

TUESDAY, JANUARY 30

Psalm 86



Lis - ten, Lord, and an - swer me.

The musical notation is a single staff in treble clef, 4/4 time signature, with a key signature of three flats (Bb, Eb, Ab). The melody consists of quarter notes: G3, A3, B3, C4, D4, E4, F4. The lyrics are placed below the notes: "Lis - ten, Lord, and an - swer me.". There is a hyphen between "Lis" and "ten", and between "an" and "swer".

WEDNESDAY, JANUARY 31

Psalm 32




Lord, for - give the wrong I have done.

The musical notation is a single staff in treble clef, 4/4 time signature, with a key signature of three flats (Bb, Eb, Ab). The melody consists of quarter notes: G3, A3, B3, C4, D4, E4, F4, G4. The lyrics are placed below the notes: "Lord, for - give the wrong I have done.". There is a hyphen between "for" and "give".

THURSDAY, FEBRUARY 1

1 Chronicles



Lord, you are ex - al - ted o - ver all.

The musical notation is a single staff in treble clef, 4/4 time signature, with a key signature of three flats (Bb, Eb, Ab). The melody consists of quarter notes: G3, A3, B3, C4, D4, E4, F4, G4. The lyrics are placed below the notes: "Lord, you are ex - al - ted o - ver all.". There are hyphens between "ex" and "al", and between "o" and "ver".

FRIDAY, FEBRUARY 2

Feast of the Presentation of the Lord

SEPERATE LEAFLET

Text: Refrain, *Lectionary for Mass*, © 1969, 1981, 1997, ICEL; Verses, *The Revised Grail Psalms*,
Psalm refrain settings by Michael J. Accurso © 2019 Liturgical Music Source. All rights reserved. Reprinted with permission under Onelicense.net A-704048.

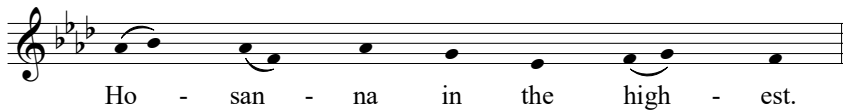
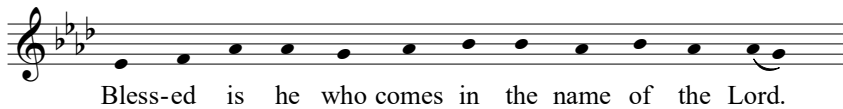
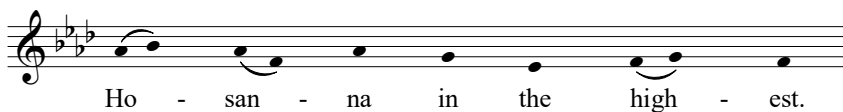
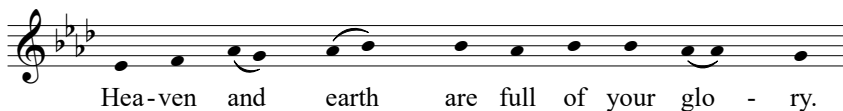
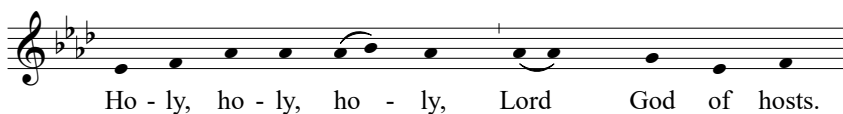
GOSPEL ACCLAMATION



From *By Flowing Waters: Chants for the Liturgy*, Copyright © 1999 by Paul E. Ford. All rights reserved. Published and administered by The Liturgical Press, Collegeville, Minnesota 56321. Use with permission Onelicense.net A-704048.
Musical adaptation copyright © 1999 by Paul F. Ford. All rights reserved. Used with permission.
English translation by the International Consultation on English texts.

EUCHARISTIC ACCLAMATION

SANCTUS



Text: *Lectionary for Mass*, © 1969, 1981, 1997, ICEL.
Music Setting: Anthony Ruff, O.S.B. © Saint John's Abbey, Collegeville, MN All rights reserved. Reprinted with permission.

MEMORIAL ACCLAMATION

We pro-claim your Death, O Lord, and pro-fess your
Res - su - rec - tion, un - til you come a - gain.

The musical notation is on a single staff in G minor (one flat) and 4/4 time. It consists of two lines of music. The first line contains the lyrics 'We pro-claim your Death, O Lord, and pro-fess your' and the second line contains 'Res - su - rec - tion, un - til you come a - gain.' The melody is simple and homophonic, using quarter and eighth notes.

AMEN

A - men, a - men, a - men.

The musical notation is on a single staff in G minor (one flat) and 4/4 time. It consists of one line of music with the lyrics 'A - men, a - men, a - men.' The melody is simple and homophonic, using quarter and eighth notes.

LAMB OF GOD

Lamb of God, you take away the sins of the world,
have mer - cy on us. grant us peace.

The musical notation is on a single staff in G minor (one flat) and 4/4 time. It consists of two lines of music. The first line contains the lyrics 'Lamb of God, you take away the sins of the world,' and the second line contains 'have mer - cy on us. grant us peace.' The melody is simple and homophonic, using quarter and eighth notes. There are first, second, and third endings indicated by brackets and numbers above the staff.

Text: *Lectionary for Mass*, © 1969, 1981, 1997, ICEL. All rights reserved. Used with permission.
Music Setting: Anthony Ruff, O.S.B. © Saint John's Abbey, Collegeville, MN All rights reserved. Reprinted with permission.

THE BASILICA
OF SAINT MARY

