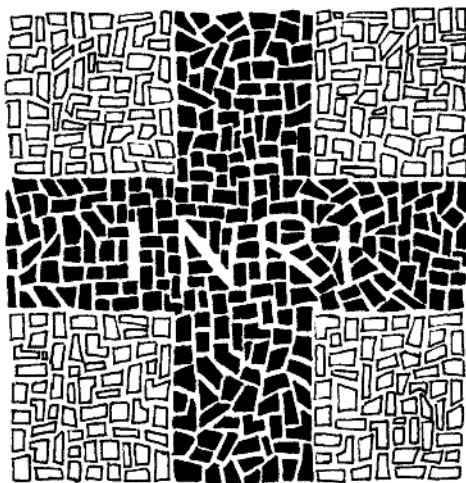


The Fourth Week of Lent

March 11-March 15, 2024



Artwork: Mosaic Cross © 2014, Lucinda Naylor | Pygokons

*Welcome to The Basilica of Saint Mary, Minneapolis, Minnesota
The First Basilica in the United States.*

PENITENTIAL RITE

Respond after the cantor:

Cantor: Ky-ri - e, e - lé - i - son. *All:* Ky-ri - e, e - lé - i - son.

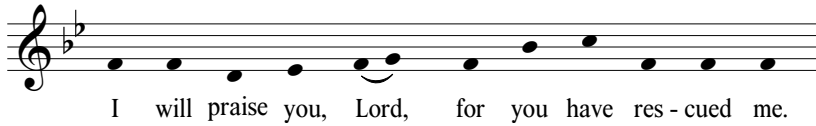
Cantor: Chri-ste e - lé - i - son. *All:* Chri-ste e - lé - i - son.

Cantor: Ky-ri - e, e-lé-i-son. *All:* Ky-ri - e, e-lé - i - son.

PSALMODY

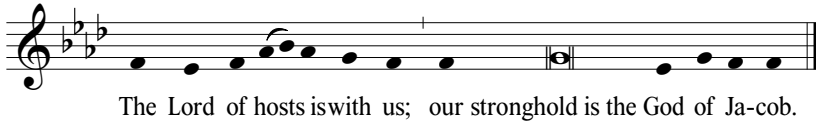
MONDAY, MARCH 11

Psalm 30



TUESDAY, MARCH 12

Psalm 46



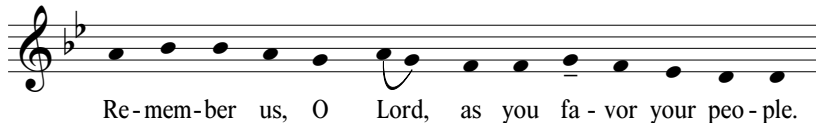
WEDNESDAY, MARCH 13

Psalm 145



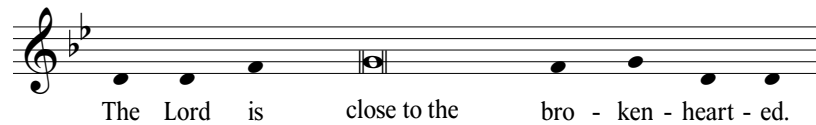
THURSDAY, MARCH 14

Psalm 106



FRIDAY, MARCH 15

Psalm 34



Text: Refrain, *Lectionary for Mass*, © 1969, 1981, 1997, ICEL.
Music: Anthony Ruff, O.S.B. © Saint John's Abbey, Collegeville, MN All rights reserved. Reprinted with permission.

GOSPEL ACCLAMATION

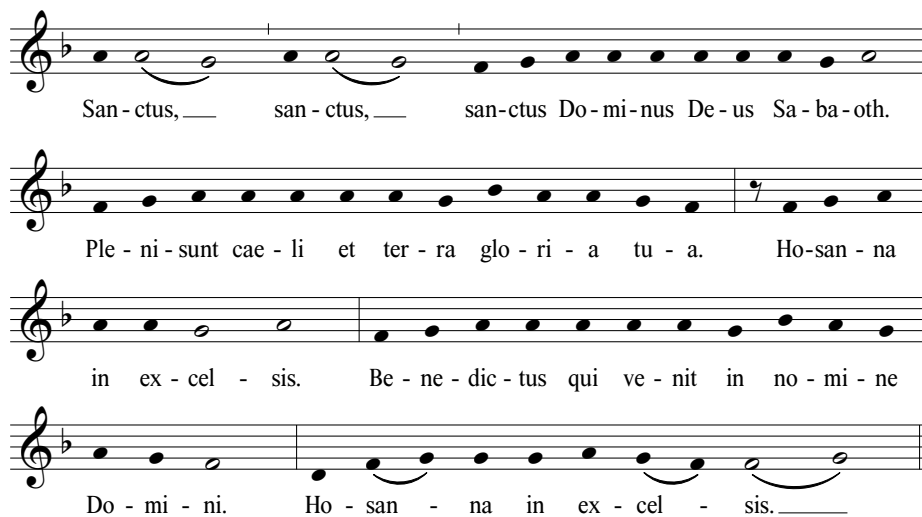


Praise to you, Lord Je - sus Christ, King of
end - less glo - ry, Sav - ior of the world.

Setting: Donald Krubsack, composer-in-residence © The Basilica of Saint Mary.
All rights reserved. Used with permission by the composer.

EUCCHARISTIC ACCLAMATION

SANCTUS



San - ctus, — san - ctus, — san-ctus Do - mi - nus De - us Sa - ba - oth.
Ple - ni - sunt cae - li et ter - ra glo - ri - a tu - a. Ho-san - na
in ex - cel - sis. Be - ne - dic - tus qui ve - nit in no - mi - ne
Do - mi - ni. Ho - san - na in ex - cel - sis. —

Text: *The Roman Missal*, 2010, ICEL.
Music: *The Roman Missal*, 2010, ICEL.

MEMORIAL ACCLAMATION

Save us, Sav - ior of the world, for by your cross and
res - sur - rec - tion, you have set us free.

AMEN

A - men, a - men, a - men.

LAMB OF GOD

A-gnus De - i, qui tol-lis pec-ca-ta mun-di, mi-se-re-re no - bis.
A-gnus De - i, qui tol-lis pec-ca-ta mun-di, mi-se-re-re no - bis.
A-gnus De - i, qui tol-lis pec-ca-ta mun-di, do-na no-bis pa - cem.

Text: *The Roman Missal*, © 2010, ICEL.
Music: *The Roman Missal*, © 2010, ICEL.

THE BASILICA OF SAINT MARY

